

MONTHLY MEMBERSHIP PROGRESS REPORT

LOCATION INDIA

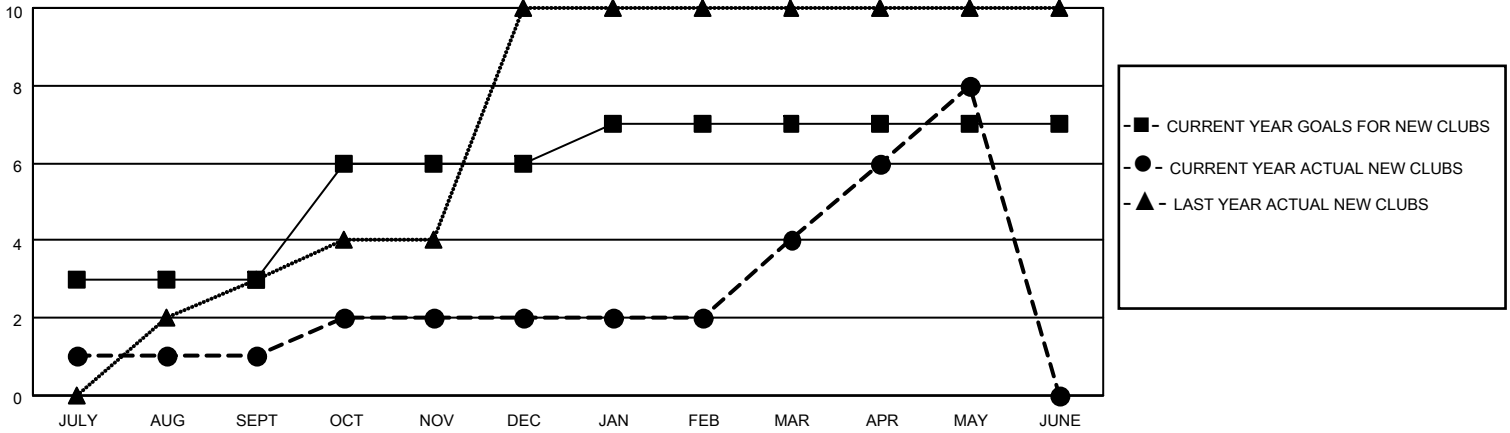
District 322C3

Results as of: 5/31/2022

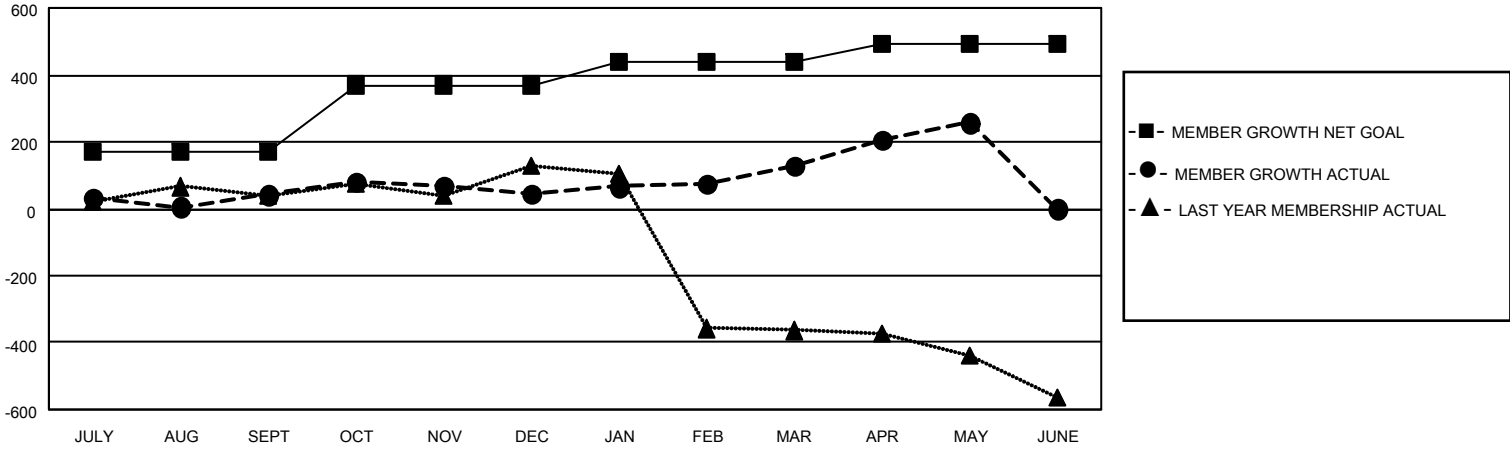
Clubs			
RESULTS FOR 2021-2022			
QUARTER	NEW CLUB GOAL	NEW CLUBS	DROPPED CLUBS
JULY/AUG/SEPT	3	1	5
OCT/NOV/DEC	3	1	2
JAN/FEB/MAR	1	2	0
APR/MAY/JUNE	0	4	0

Members			
RESULTS FOR 2021-2022			
QUARTER	MEMBER GROWTH NET GOAL	MEMBER GROWTH ACTUAL	DROPPED MEMBERS ACTUAL (including transfers)
JULY/AUG/SEPT	170	152	85
OCT/NOV/DEC	200	132	124
JAN/FEB/MAR	70	150	33
APR/MAY/JUNE	50	192	60

GOALS AND ACTUAL NEW CLUBS CUMULATIVE



GOALS AND ACTUAL MEMBERS CUMULATIVE



DROPPED CLUBS: 7

60 CLUBS OF 103 ADDED 1 OR MORE NEW MEMBERS

GENDER DISTRIBUTION

MALE	2,432 (73.74%)
FEMALE	866 (26.26%)
NON BINARY	0 (0.00%)
PREFER NOT TO ANSWER	0 (0.00%)

DROPPED MEMBERS

[CLICK HERE FOR CUMULATIVE MEMBERSHIP DATA](#)

DECEASED	20
CLUB CANCELLED	90
OTHER	192
TOTAL	302

TOTAL FAMILY UNIT MEMBERS 2,241

FAMILY MEMBERS PAYING HALF DUES 1,449